

# Strengthening Innovation and Coordination for One Health Implementation in the GMS

Prof. Dr. Wongsra Laohasiriwong  
Dean, Faculty of Public Health, KCU



# LESSONS LEARNED from COVID-19

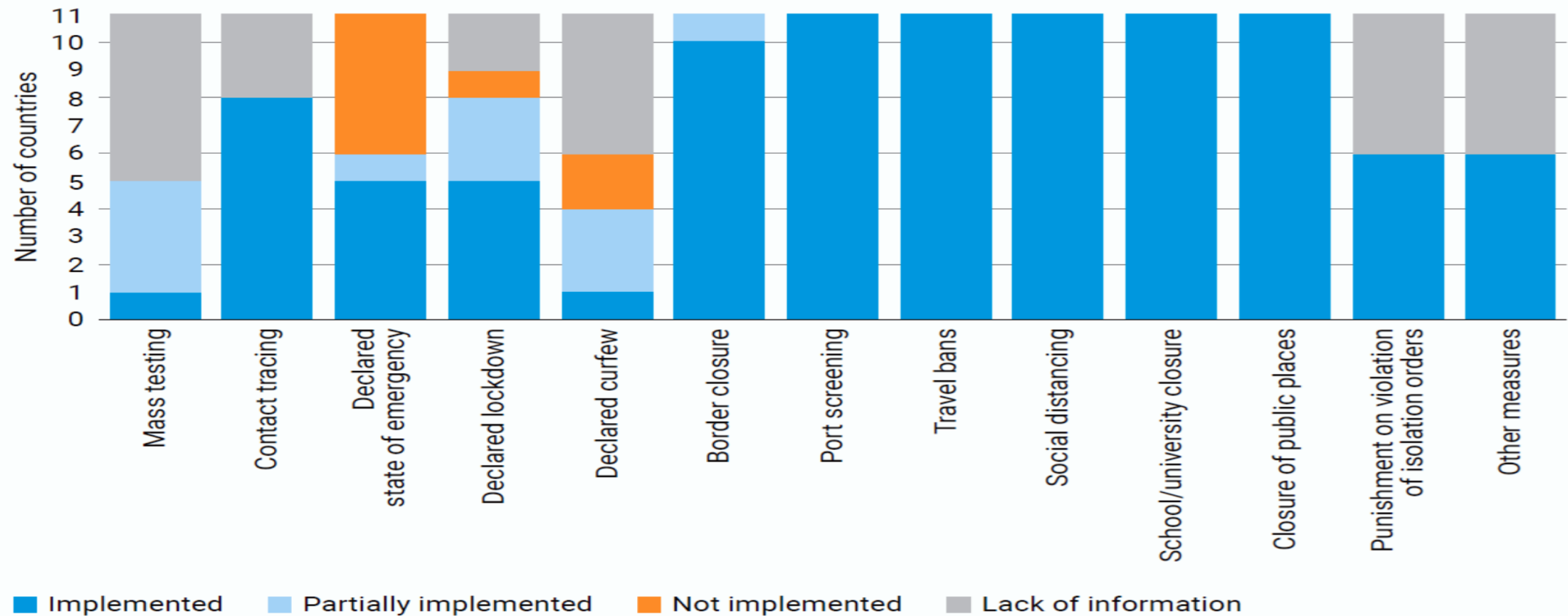
**Setting the Scene of GMS countries in health capacities: Lessons-learned from COVID-19 (sub-regional strengths and gaps achieving resilient health systems)**

# Preparedness Dashboard of Southeast Asian Countries for COVID-19

Low to high									
Human Development				Health System			Connectivity		
	Human development index (HDI)	Inequality-adjusted HDI (IHDI)	Inequality in HDI	Physicians	Nurses and midwives	Hospital beds	Health expenditure	Mobile phone subscriptions	Fixed broadband subscriptions
	(index) 2018	(index) 2018	(percentage) 2018	(per 10,000 people) 2010-2018	(per 10,000 people) 2010-2018	(per 10,000 people) 2010-2018	(% of GDP) 2016	(per 100 people) 2017-2018	(per 100 people) 2017-2018
Singapore	0.935	0.810	13.3	23.1	72	24	4.5	145.7	28.0
Brunei Darussalam	0.845	..	..	17.7	66	27	2.3	131.9	11.5
Malaysia	0.804	..	..	15.1	41	19	3.8	134.5	8.6
Thailand	0.765	0.635	17.0	8.1	30	21	3.7	180.2	13.2
Philippines	0.712	0.582	18.2	12.8	2	10	4.4	110.1	3.7
Indonesia	0.707	0.583	17.5	3.8	21	12	3.1	119.8	3.3
Viet Nam	0.693	0.580	16.3	8.2	14	26	5.7	147.2	13.6
Timor-Leste	0.626	0.450	28.0	7.2	17	59	4.0	103.2	0.0
Lao People's Dem. Rep.	0.604	0.454	24.9	5.0	10	15	2.4	51.9	0.6
Myanmar	0.584	0.448	23.2	8.6	10	9	5.1	113.8	0.2
Cambodia	0.581	0.465	20.1	1.7	10	8	6.1	119.5	1.0

Source: The Human Development Index

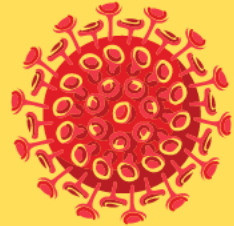
# Containment and Mitigation measures in Southeast Asian Countries for COVID-19



Source: Impact of Covid-19 in Southeast Asia



# Lessons from ASEAN's Response to COVID-19



## LESSONS FROM ASEAN'S RESPONSE TO COVID-19



**NEED FOR A COHERENT,  
MULTI-SECTORAL,  
MULTI-STAKEHOLDER  
AND WHOLE-OF-ASEAN  
COMMUNITY APPROACH**



**EFFECTIVENESS OF  
COORDINATING  
POLICIES AND  
ACTIONS BASED  
ON A COMMON  
FRAMEWORK**



**STRENGTHEN SOCIAL  
PROTECTION SYSTEMS  
AND INFRASTRUCTURE**



**UPHOLD AND  
ADHERE TO THE  
COMMON VALUES  
ON FREE TRADE  
AND INVESTMENT  
FACILITATION**



**RECOGNISE AND  
ENCOURAGE BILATERAL AND  
MULTILATERAL INITIATIVES  
SUCH AS TRAVEL  
BUBBLES/GREEN LANES**

Source: Singapore Institute of International Affairs

# Learnings from past disasters and features 10 lessons and good practices from Asia-Pacific

## Caught Unaware:

Countries need to anticipate and plan for pandemics and disasters

## Health First:

A faster and stronger health response is critical to contain pandemics

## Preventing a Socio-Economic Crisis:

Rapid funding is pivotal to protect the most vulnerable

## Get the Evidence:

Data and Assessments must guide recovery

## Show me the Money:

Diverse financing arrangements help to sustain long term recovery

## Be the Leader:

Dedicated national leadership is essential to achieve effective recovery

## Stronger Together:

Engaging local governments and community for inclusive response

## Build Forward:

Greener, Smarter, Better!

## Use the Data:

Disaster data can help countries deal with changing risks

## Innovate, Innovate, Innovate!



Mechanism the GMS countries that  
used to increase innovation and  
coordination moving toward  
resilient health and society

# Three Pillars of Public Health Emergency Management

## Prevention and Preparedness (Pillar 1)

- Emergency broadcasting service
- Social distancing and Behavior Changes
- Remote Medicare
- Telemedicine using apps (private sector)
- Predictive Research
- Creating apps
- Behavior changes

## Detection and Risk Assessment (Pillar 2)

- Digital contact-tracing apps
- Self-reporting of the symptoms
- Communication channels and Information applications providing data about the pandemic situations
- Support for policy choice in decision making

## Response (Pillar 3)

- Genetic vaccines
- Wearable tech and early illness detection
- Discover of new way in drug use
- Aid distribution
- Economic recovery

**Information management standard among AMS and ASEC-health cooperation bodies considering the context of the current COVID-19**



# Digital Applications used in Thailand during COVID-19

## Tracking case



## Standard for Setting



## Vaccination History

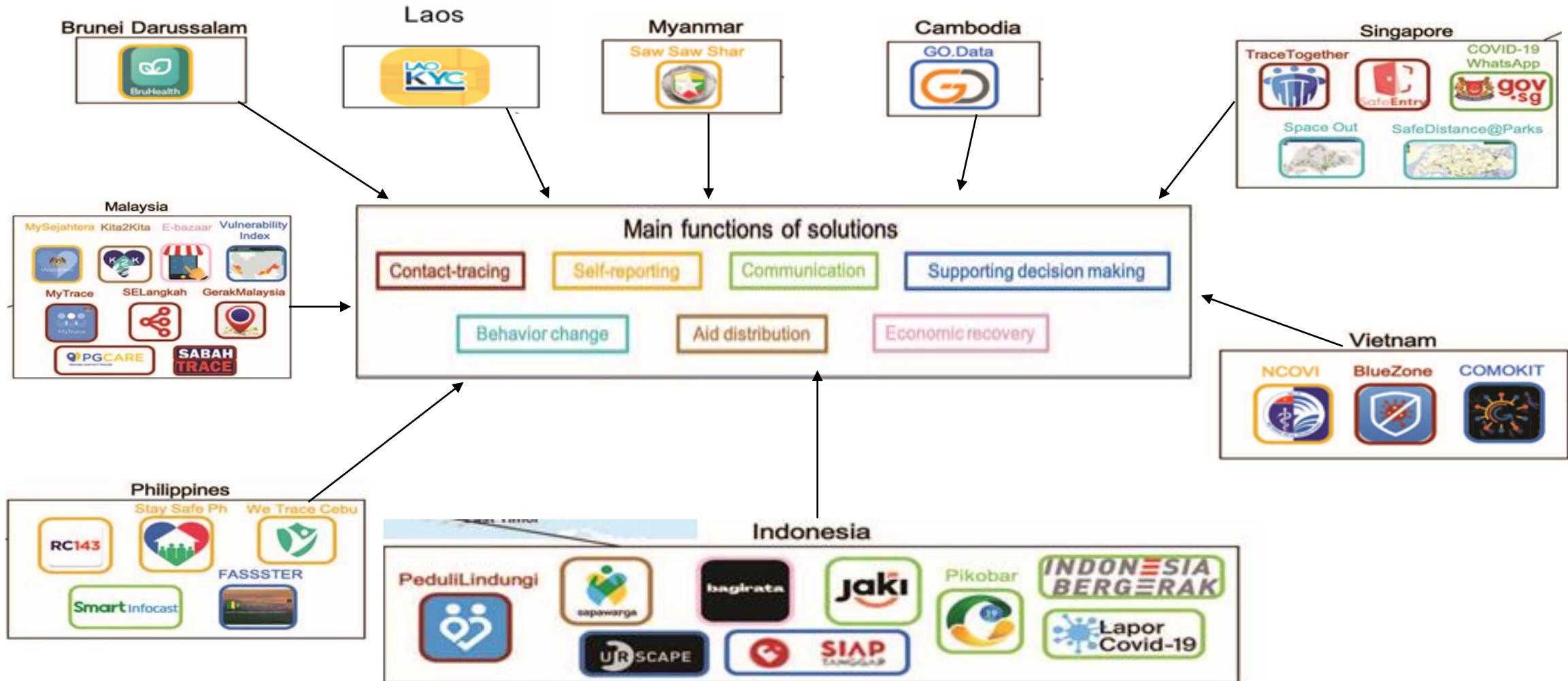


## Individual assessment



Example of Service / Telehealth / Tool for Operational Team

# Digital Applications used in AMS (Except Thailand) during COVID-19



## Highly integrated solutions but not well used by citizens (B2C apps)

### Indonesia

Jaki/JakCorona (communication)  
Sapawarga (aid distribution)

### Thailand

Card2U (communication)  
Mor Chana (contact tracing)  
Thai Chana (contact tracing)

### Vietnam

NCOVI (self-reporting)

## Highly integrated solutions well used by citizens (B2C apps) or governments (B2G solutions)

### Philippines

Smart Infocast (communication)

### Thailand

SydeKick (self-reporting)

### Vietnam

COMOKIT (support for decision-making)  
BlueZone (contact tracing)

### Malaysia

E-bazaar Melaka (economic recovery)  
Gerak Malaysia (contact tracing)  
Kita2Kita (aid distribution)  
MySejahtera (contact tracing)  
MyTrace (contact tracing)  
PGCare (contact tracing)

### Brunei Darussalam

BruHealth (self-reporting)

### Cambodia

Go.Data (support for decision-making)

### Indonesia

Pikobar (communication)  
Siap Tanggap (support for decision-making)  
Ur-scape (support for decision-making)

### Singapore

COVID-19 WhatsApp GOV.SG (communication)  
Safe Distance @ Parks (behavior change)  
Safe Entry (contact tracing)  
Space Out (behavior change)  
TraceTogether (contact tracing)

## Insufficiently integrated solutions not well used by citizens (B2C apps)

### Indonesia

PeduliLindungi (contact tracing)

### Myanmar

Saw Saw Shar (self-reporting)

### Philippines

FASSSTER (support for decision-making)

RC143 (self-reporting)

Stay Safe Ph (self-reporting)

We Trace Cebu (self-reporting)

## Insufficiently integrated solutions but well used by citizens (B2C apps)

### Indonesia

Bagirata (economic recovery)

Indonesia Bergerak (communication)

LaporCovid19 (communication)

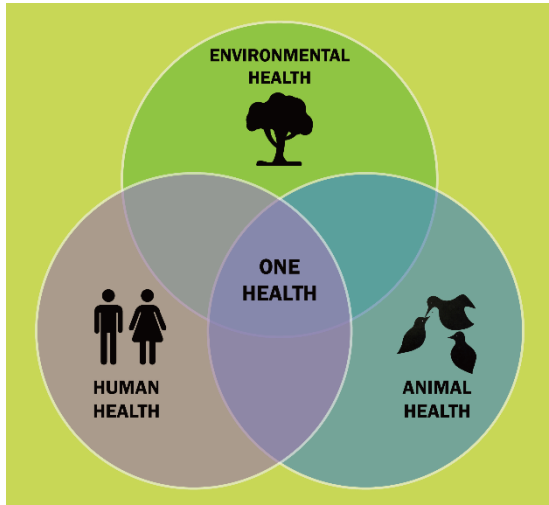
### Malaysia

Vulnerability Index (support for decision-making)

### Thailand

5Lab Market (economic recovery)

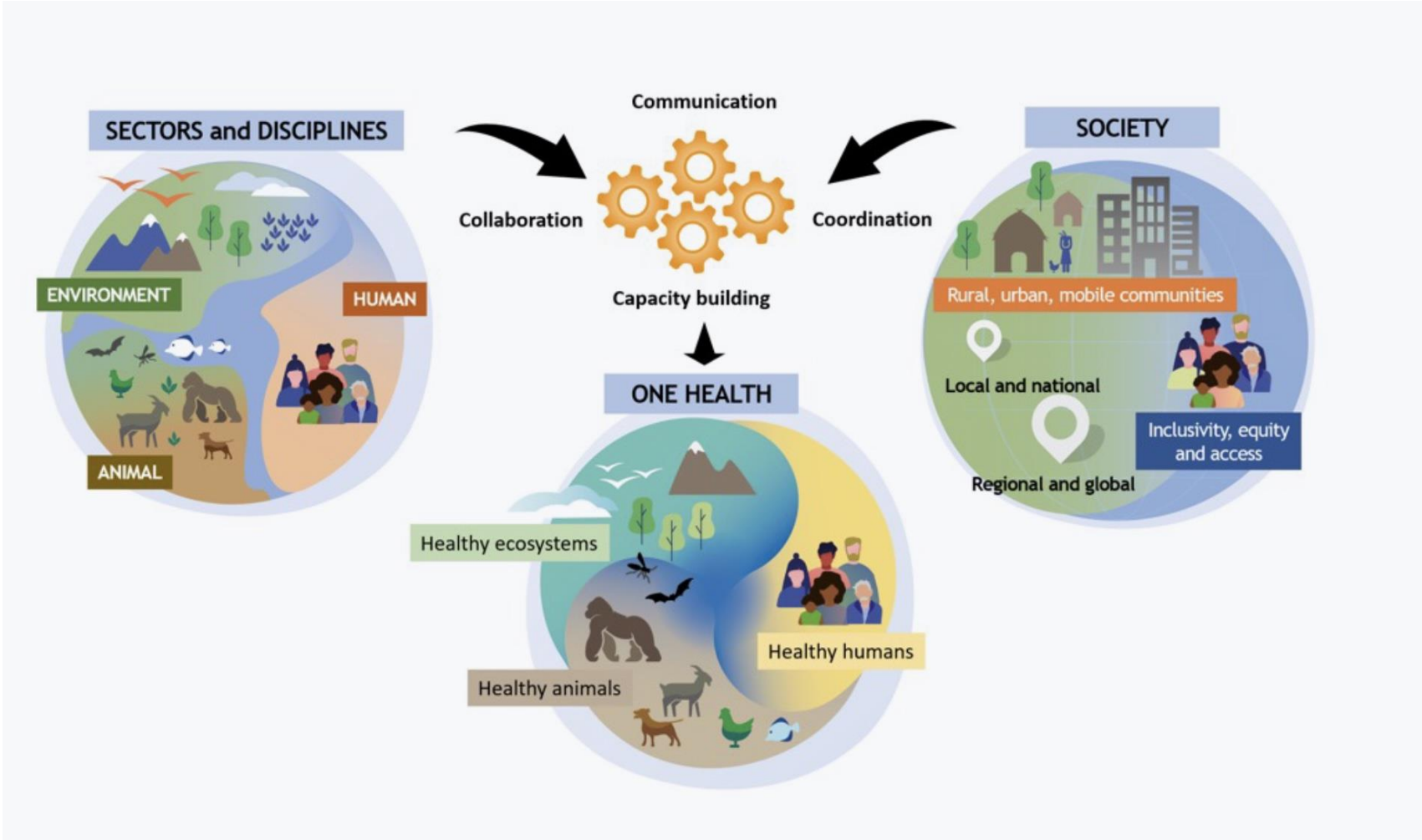
QueQ (behavior change)



**One Health as the solution for building the resilient health and society and importance of cross-sectoral collaboration in one health implementation**



## One Health Promotes A Sustainable And Healthy Future Through Collaboration, Communication, Coordination And Capacity Building

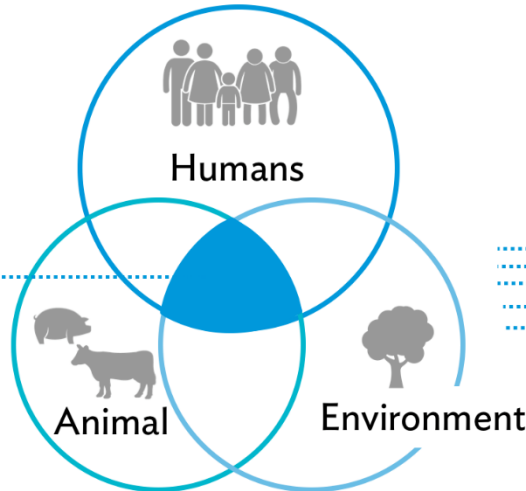


Source: ONE HEALTH JOINT PLAN OF ACTION (2022-2026)

# The One Health Model

## One Health

- Well-being
- Nature
- Sustainability
- Food security



## Trans disciplinary

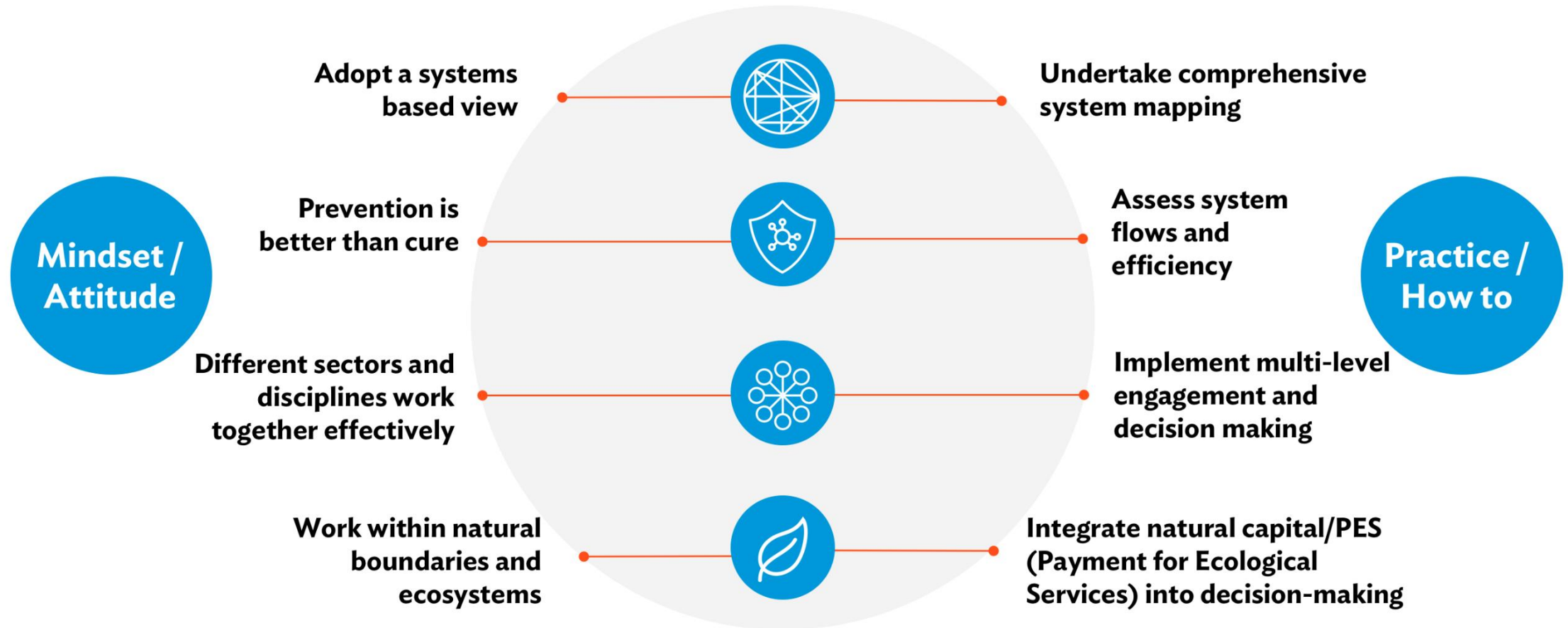
Collaboration | Coordination | Communication

- Adopt a systems-based view
- Prevention is better than cure
- Work within natural boundaries and ecosystems

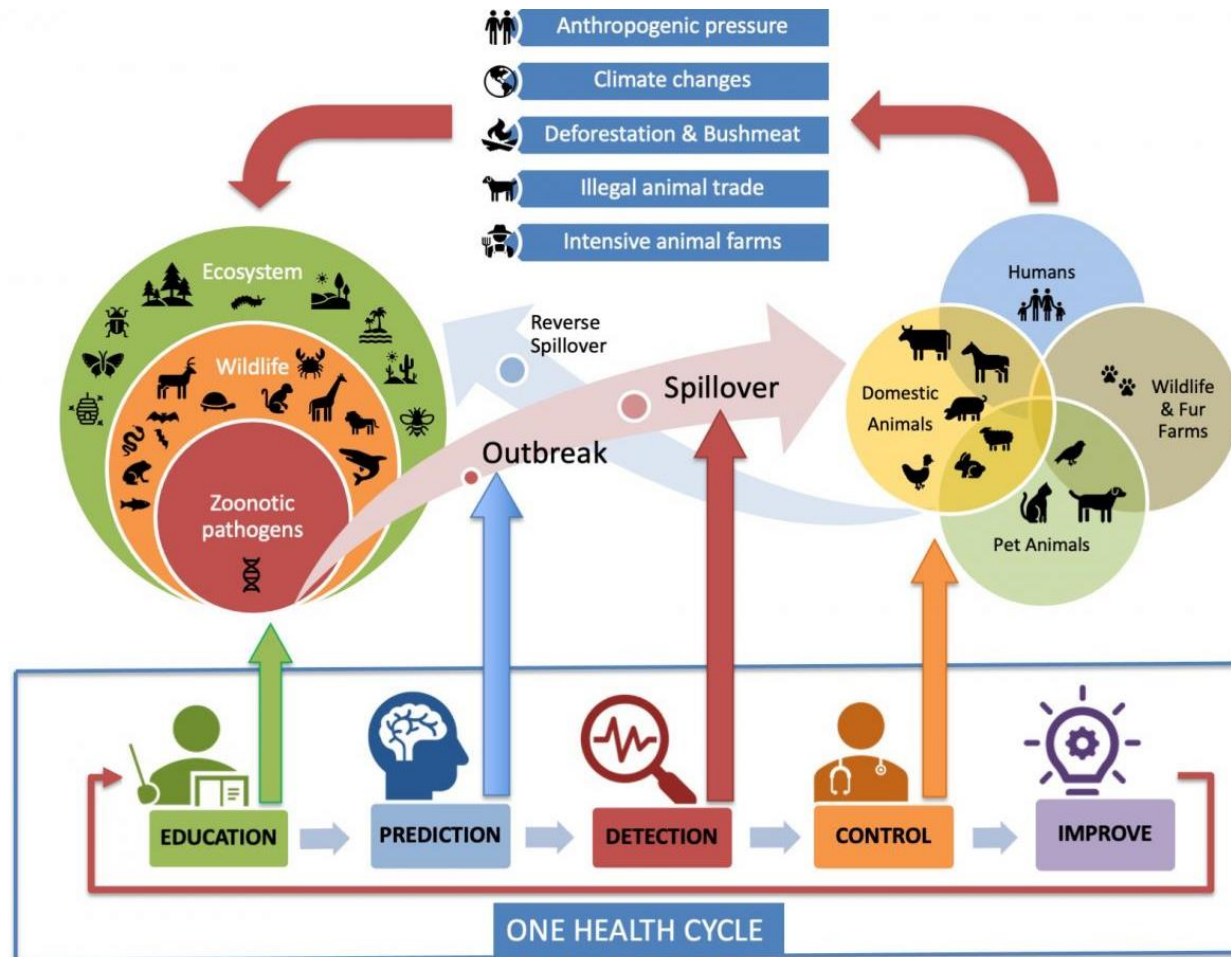
## Transformative Outcomes

- 1 Reduced risk of future pandemics and outbreak
- 2 Higher productivity, resilient, sustainable landscapes
- 3 Improved ecological services, biodiversity conservation, pollution control
- 4 Better quality, traceable food and green, sustainable consumption
- 5 Improved climate mitigation & adaptation capacity

# One Health Basic Operational Framework



# One Health Cycle



# COVID-19 pandemic and One Health

---

The COVID-19 pandemic and its profound impact on human health, society and economies around the world highlighted **the interconnectedness between biodiversity, a healthy environment, food systems and our health**, and has revealed vulnerabilities at all levels.

Although warnings of a pandemic arising from a previously unknown zoonotic pathogen have been on the international radar for many years, the COVID-19 crisis has reinforced the urgent need for **an integrated, One Health approach to pandemic prevention**.



# COVID-19 pandemic and One Health

## Information sharing initiatives

- ASEAN +3 Emerging Infectious Diseases (EID) Program (2004–2008)
- ASEAN Highly Pathogenic Avian Influenza (HPAI) Task Force
- ASEAN Cooperation on Animal Health
- ASEAN Work Program on HIV/ AIDS III (2006–2010)
- ASEAN-Japan Project for Stockpile of Antivirals and PPE against Potential Pandemic Influenza (2006–2013)
- Regional Strategy for Progressive Eradication of HPAI (2008–2010)
- ASEAN +3 Partnership Laboratories (APL)
- Disaster Safety of Health Facilities in the AADMER Work Program (2010–2015)
- ASEAN Risk Communication Resource Centre
- ASEAN Risk Assessment and Risk Communication Centre (ARARC)

# COVID-19 pandemic and One Health

---

## Network initiatives

- Regional Framework for Control and Eradication of HPAI (2006–2008)
- ASEAN Assessment of National Multi-Sectoral Pandemic Preparedness and Response (2007–2010)
- MOU between ASEAN Secretariat and WHO
- One ASEAN One Response Framework in ASEAN Agreement on Disaster Management and Emergency Response (AADMER)
- ASEAN Emergency Operations Centre (EOC) Network for public health emergencies
- ASEAN Coordinating Council Working Group (ACCWG) on Public Health Emergencies
- Public health laboratories network under the ASEAN Health Cluster 2 on Responding to All Hazards and Emerging Threats
- Regional Public Health Laboratories Network (RPHL) through the Global Health Security Agenda platform 2020 onwards
- ASEAN Plus Three Senior Officials Meeting for Health Development (APT SOMHD) Mechanism Responding to COVID-19
- ASEAN Health Ministers and ASEAN Plus Three Health Ministers in Enhancing Cooperation on COVID-19
- ASEAN Bio Diaspora Virtual Centre (ABVC) for Big Data Analytics and Visualization

# COVID-19 pandemic and One Health

---

## Training initiatives

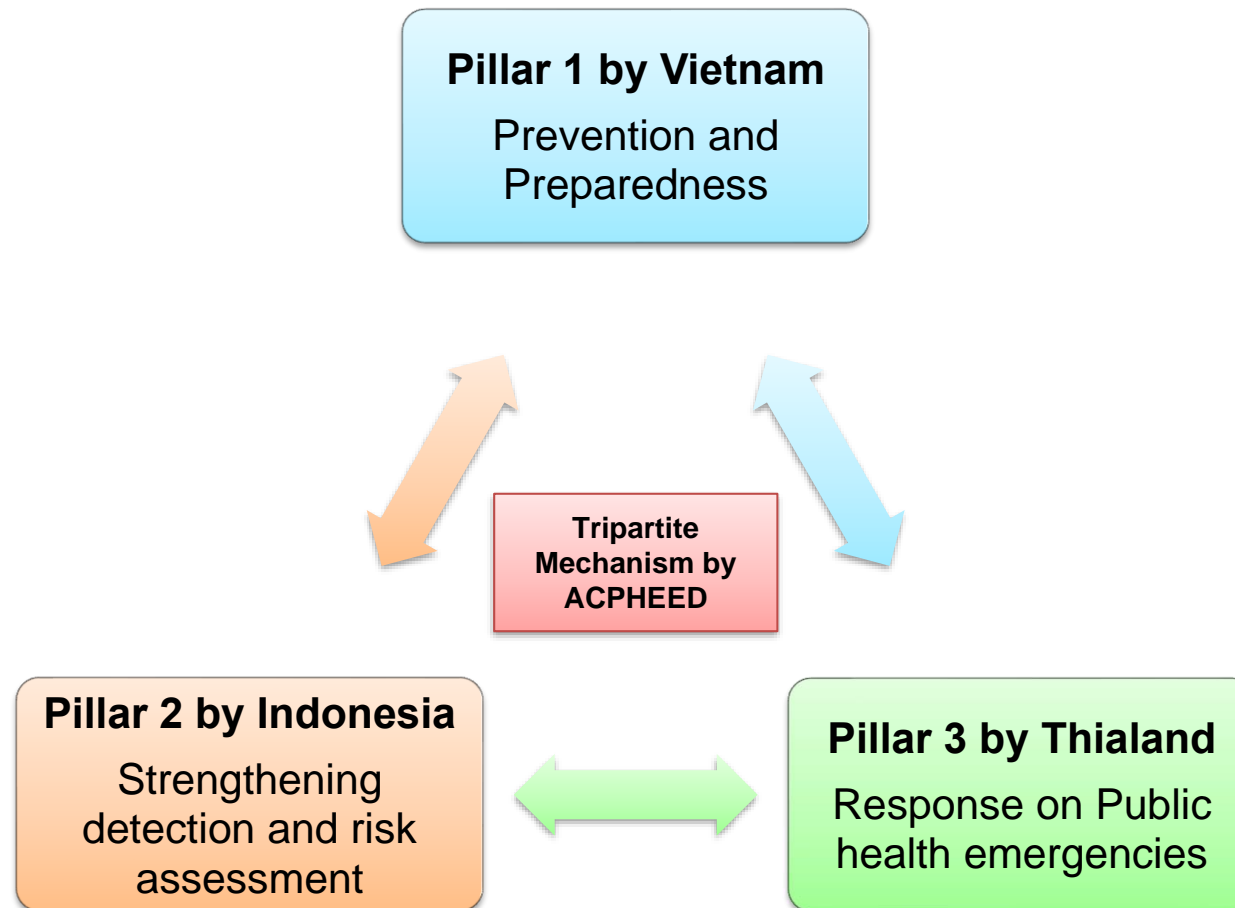
- ASEAN +3 Field Epidemiology Training Network (FETN)
- ASEAN Plus Three Field Epidemiology Training Network (ASEAN+3 FETN)

## COVID-19 ASEAN Response Fund

- ASEAN successfully established Covid-19 ASEAN Response Fund in 2020 with the support from its Dialogue Partners. On the one hand, the regional governments still need to collaborate on technical aspects such as vaccine swaps and building an efficient mechanism for fund utilization.

# COVID-19 pandemic and One Health

ASEAN Centre for Public Health Emergencies and Emerging Diseases (ACPHEED)



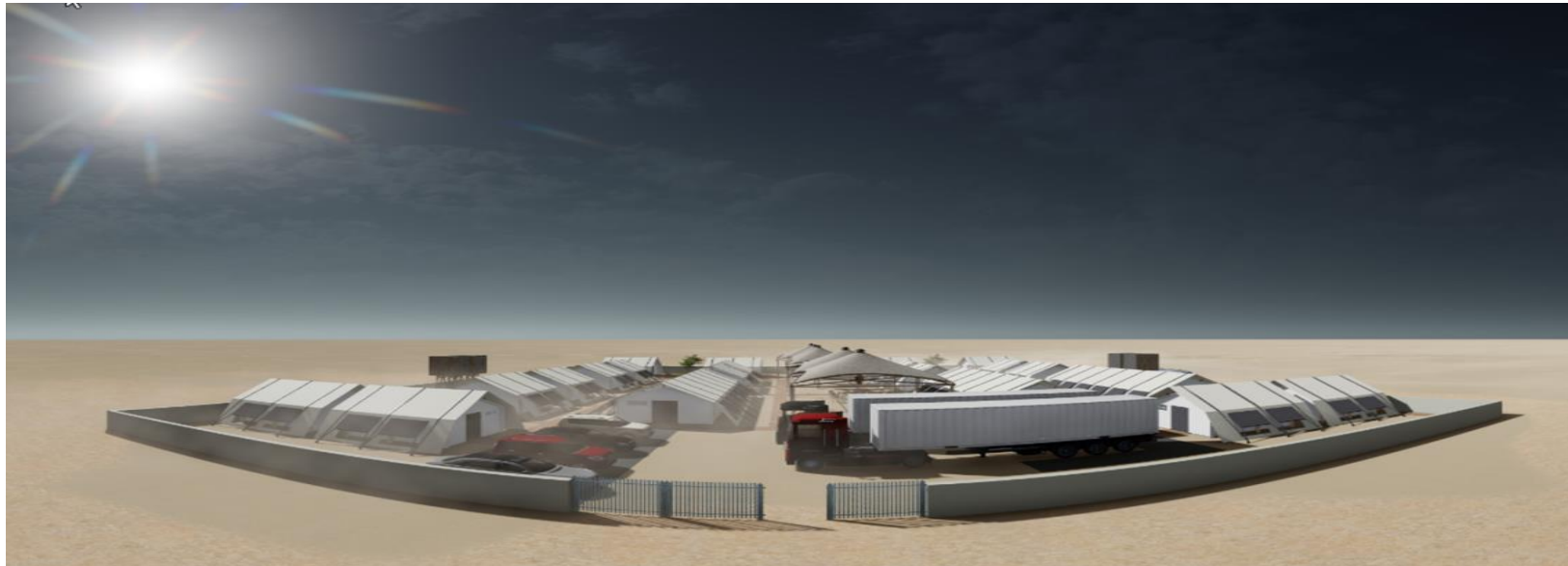


**Innovative solutions as good practices  
that should be scaled up in preparation  
for future outbreaks in the GMS**



# 1. Rapidly deployable Health Emergency Facility to respond to future pandemics

---

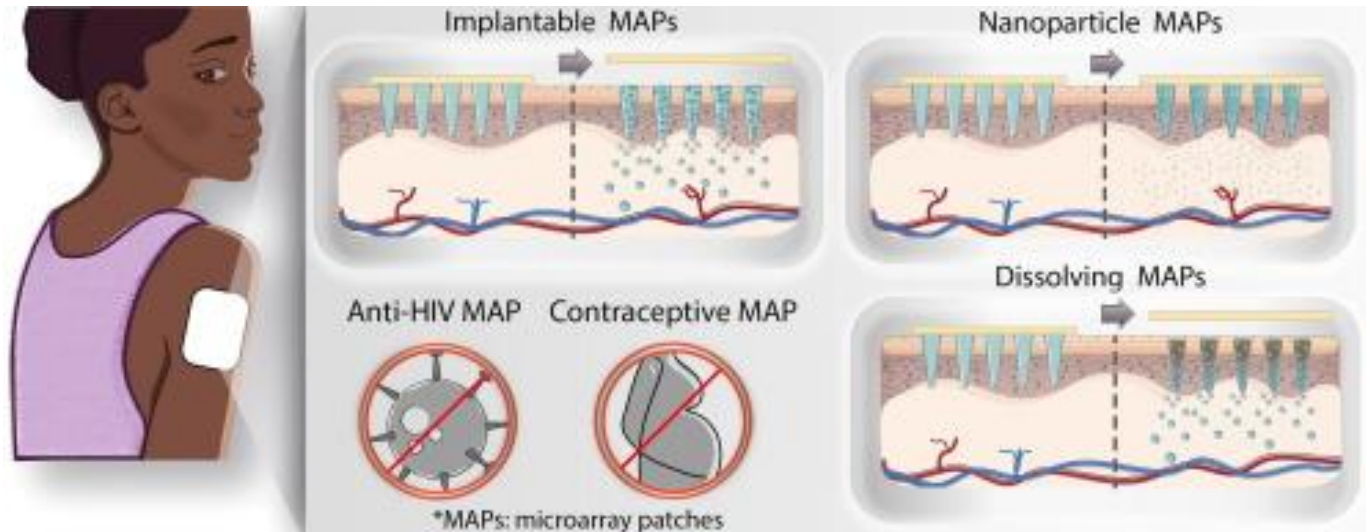


## 2. Accessing real-time data to improve vaccine distribution and monitoring

---



### 3. Groundbreaking vaccine technology, without the need for conventional needles and syringes



## 4. Developing and deploying tools to understand and monitor spread

---





## 5. Strengthening global oxygen systems



## 6. Empowering innovators on-the-ground to contribute to stronger health systems

---





# Overarching recommendations

Emergency  
broadcasting service  
(cellular broadcasting  
service)

Smart Working  
by adopting  
technologies

A special website  
providing  
information of  
solution companies  
for remote working

Smart working  
and social  
distancing  
(Holding virtual  
video  
conferences)

Cyber Security  
Guidelines for  
Staff Working  
Remotely

Remote Education:  
Providing  
educational  
contents by the  
central government

Remote  
Medicare

Remote  
medicine  
targeting  
confirmed  
coronavirus  
patients

Telemedicine  
using apps  
(private sector)

Predictive  
Research

Creating apps

Innovative  
Laboratory  
Network

Smart  
International  
Surveillance  
System

Innovation of  
user-supportive  
AI

# Q&A





Thank you!

