



ORGANIZED BY



CO-HOSTED BY



IN PARTNERSHIP WITH



SEZ Development By Royal Group Phnom Penh SEZ

19 October, 2022

Company Profile



INCORPORATION

19 April, 2006

LISTING IN STOCK MARKET

30 May, 2016

CAPITAL

59 million US dollars

MAIN SHAREHOLDERS

Inter Logistics (Cambodia) Co., Ltd.	45.09%
JWD InfoLogistics Pcl. (Thailand)	14.61%
Zephyr Co., Ltd. (Japan)	14.17%
Henry NG (Singapore)	9.04%

BOARD OF DIRECTORS

Neak Oknha KITH Meng (Mr.)
as Chairman of the Board
UEMATSU Hiroshi (Mr.)
Mark HANNA (Mr.)
OTSUBO Hiroshi (Mr.)
Tanate PIRIYOTHINKUL (Mr.)
Arthur LAW Hian Tat (Mr.)
KANG Weigeih (Mr.)

(Effective on 26 Jan 2022)



ROYAL GROUP
PHNOM PENH SEZ

Our vision is to become an outstanding SEZ by developing sustainable community by creating opportunities and by improving the quality of life.

Our mission is to contribute to the industrialization of the country in environment-friendly way with innovative technology.

 **ROYAL GROUP**
POIPET SEZ

Thailand

Laos

CAMBODIA

Poi Pet

418km

PHNOM PENH

Phnom Penh Port

Phnom Penh
International
Airport

Koh Kong

 **ROYAL GROUP**
PHNOM PENH SEZ

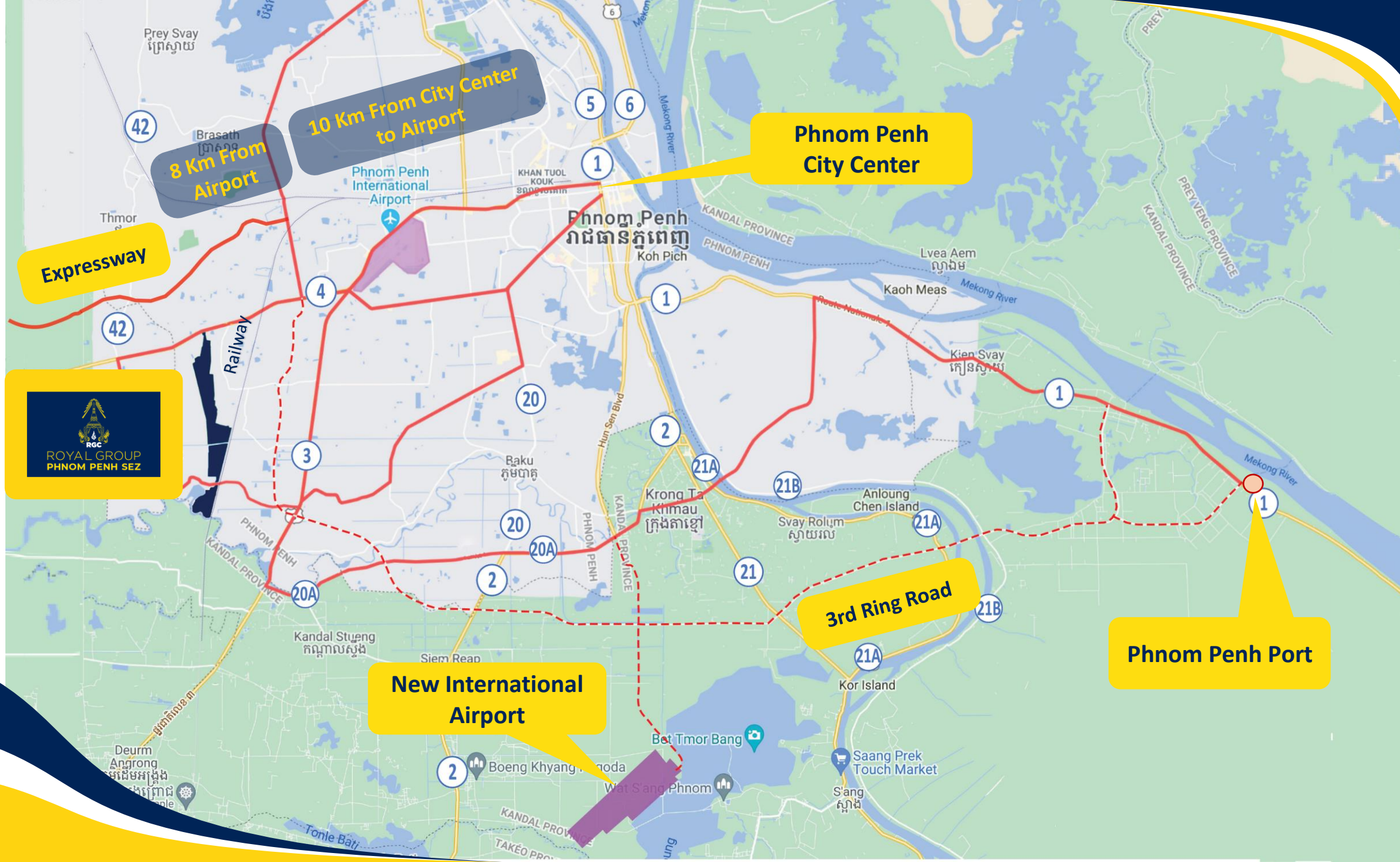
178km

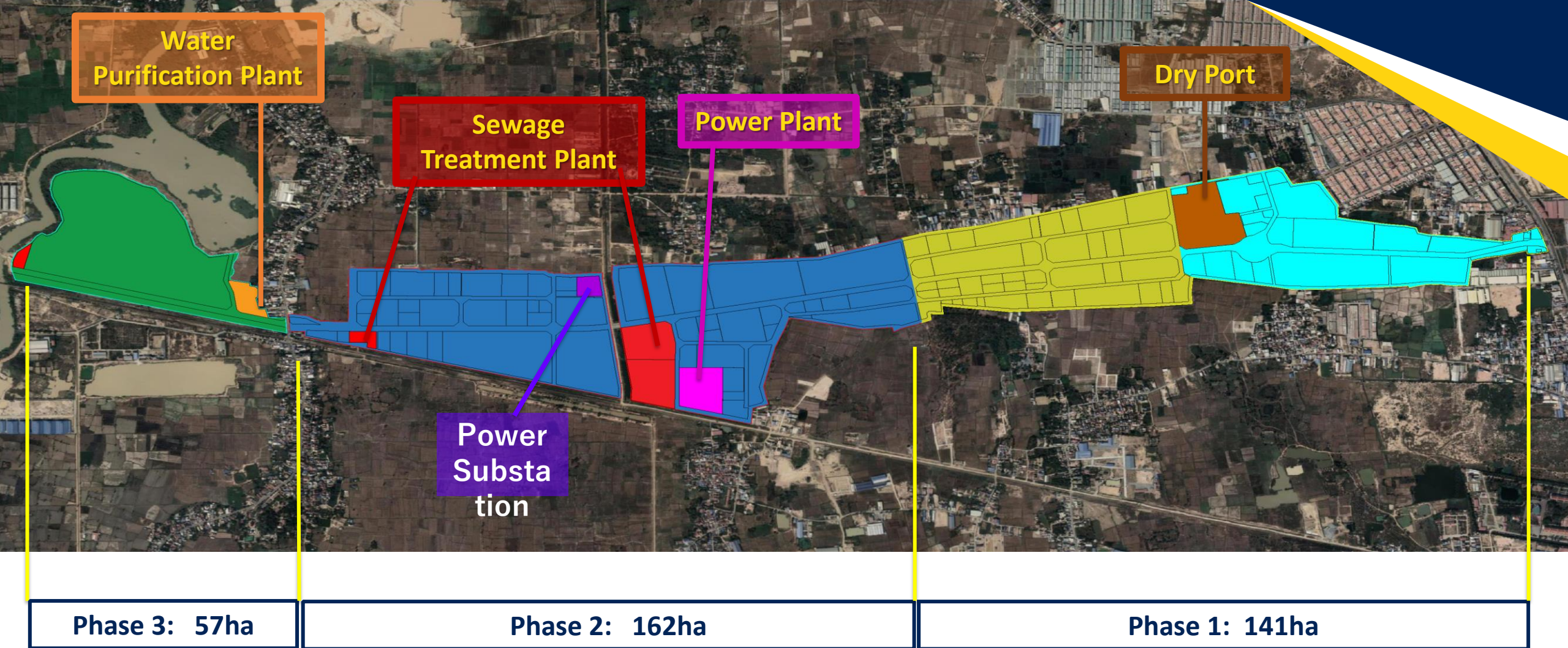
240km

Vietnam

Bavet

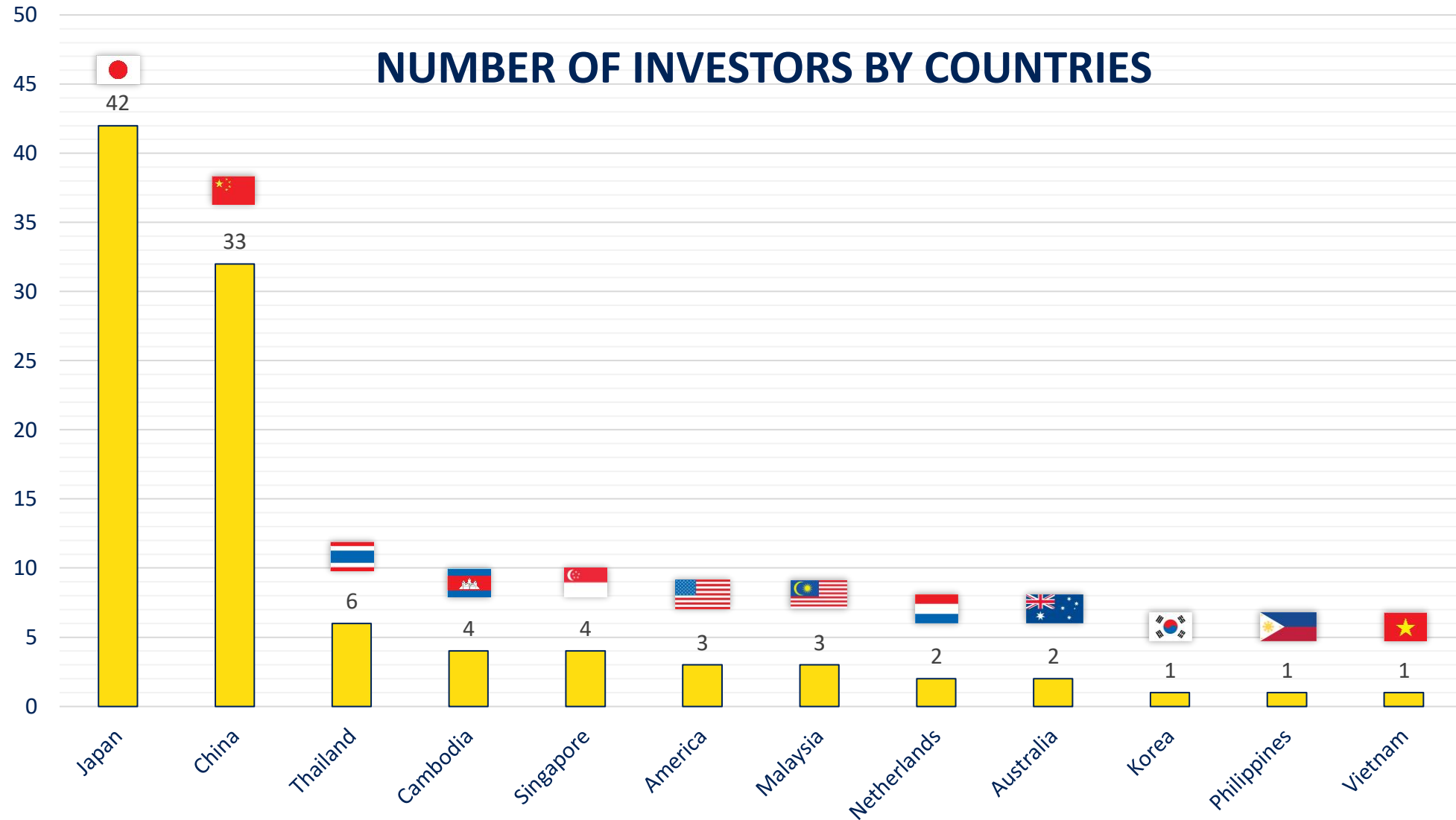
Sihanoukville
Port



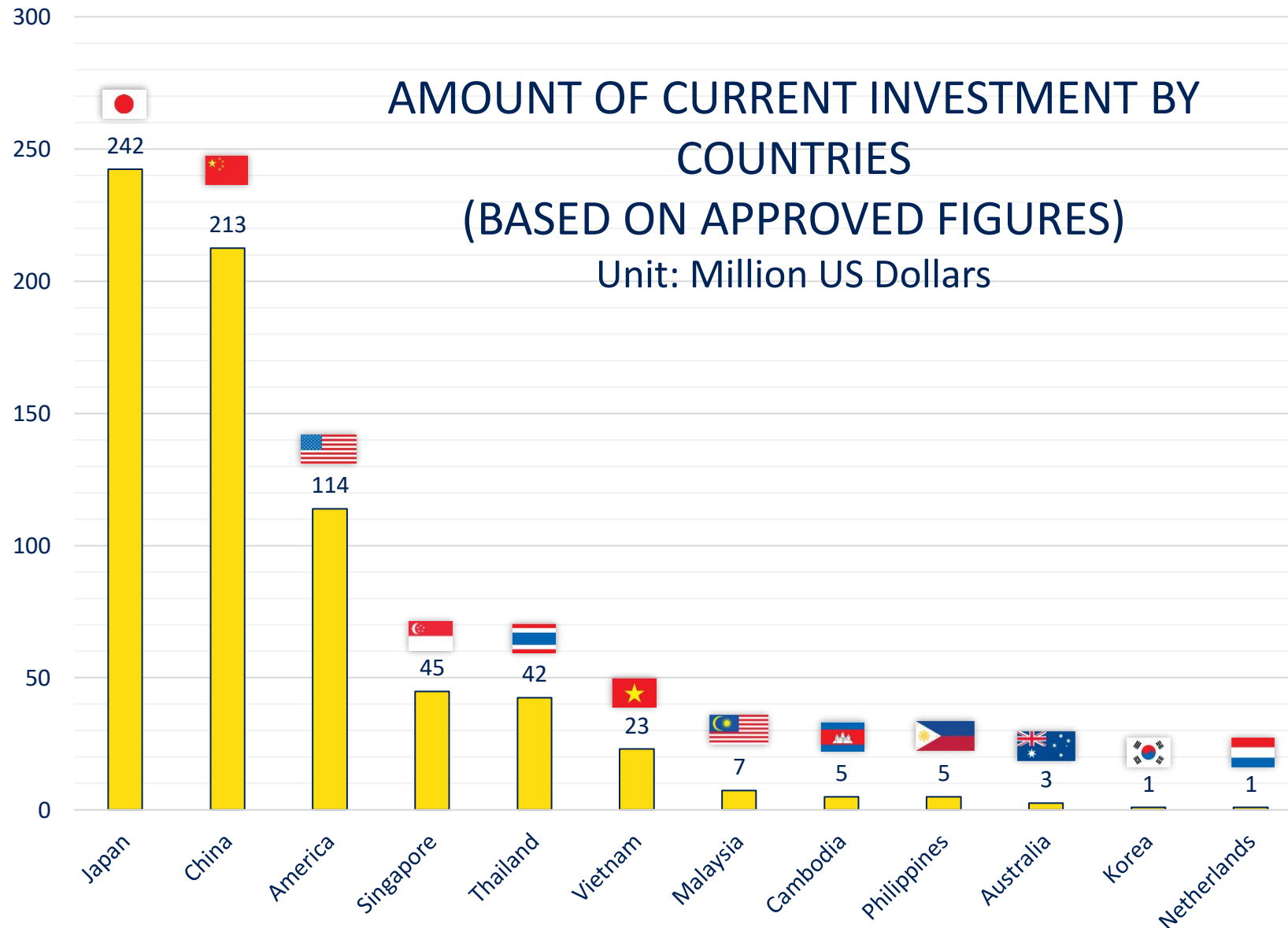


Expansion of another 100 ha in progress

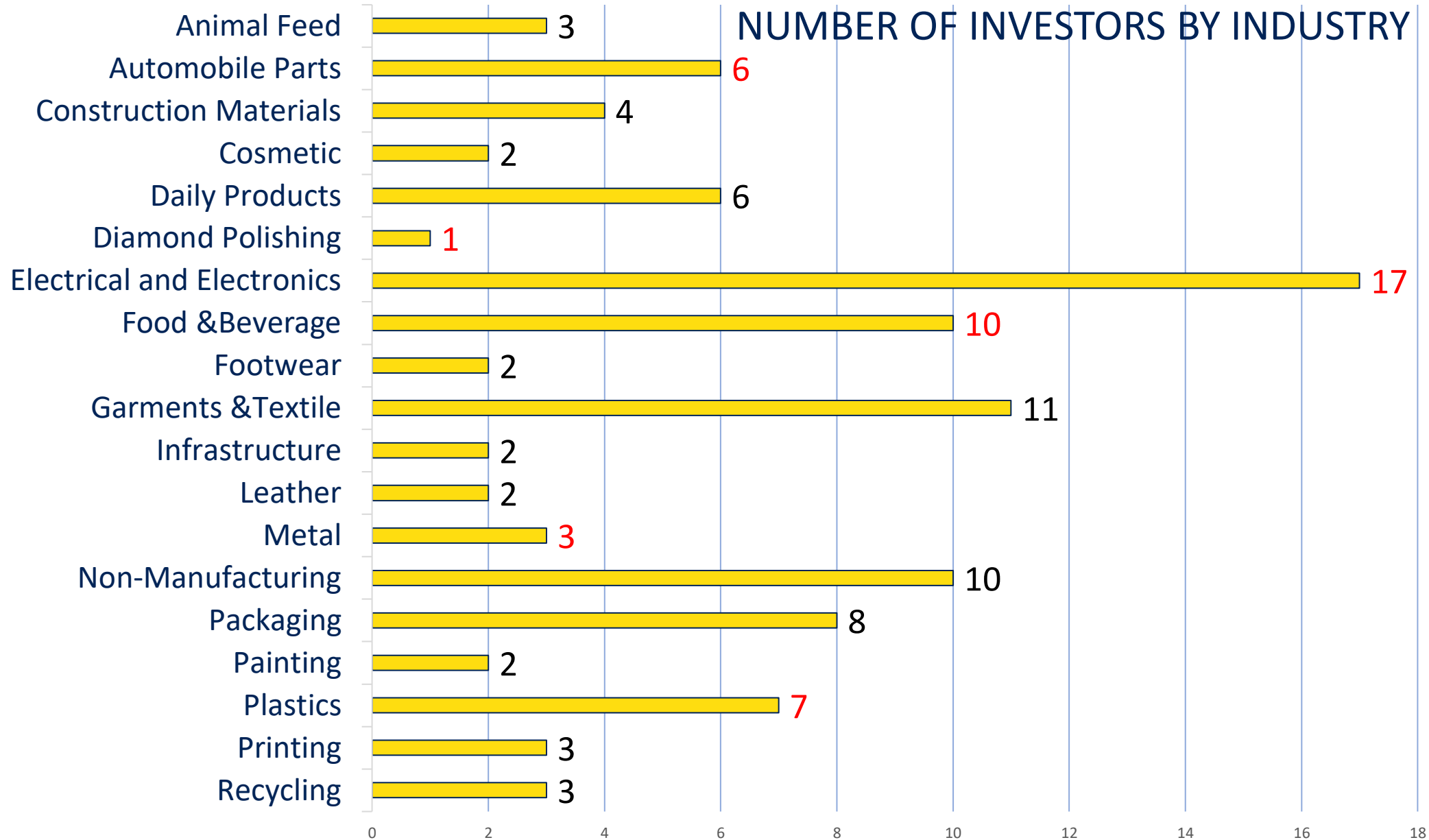
Investors in ROYAL GROUP PHNOM PENH SEZ (1)



Investors in ROYAL GROUP PHNOM PENH SEZ (2)



Investors in ROYAL GROUP PHNOM PENH SEZ (3)



DENSO

PRODUCT: Automobile Parts

EMPLOYEE: 427





MINEBEA CAMBODIA

PRODUCT: Miniature Motors and Electronic Component
EMPLOYEES: 6,292





SUMI WIRING SYSTEMS

PRODUCT: Wiring harness for automobile
EMPLOYEES: 4,670





LAURELTON DIAMOND

PRODUCT: Diamond Polishing

EMPLOYEE: 2,174





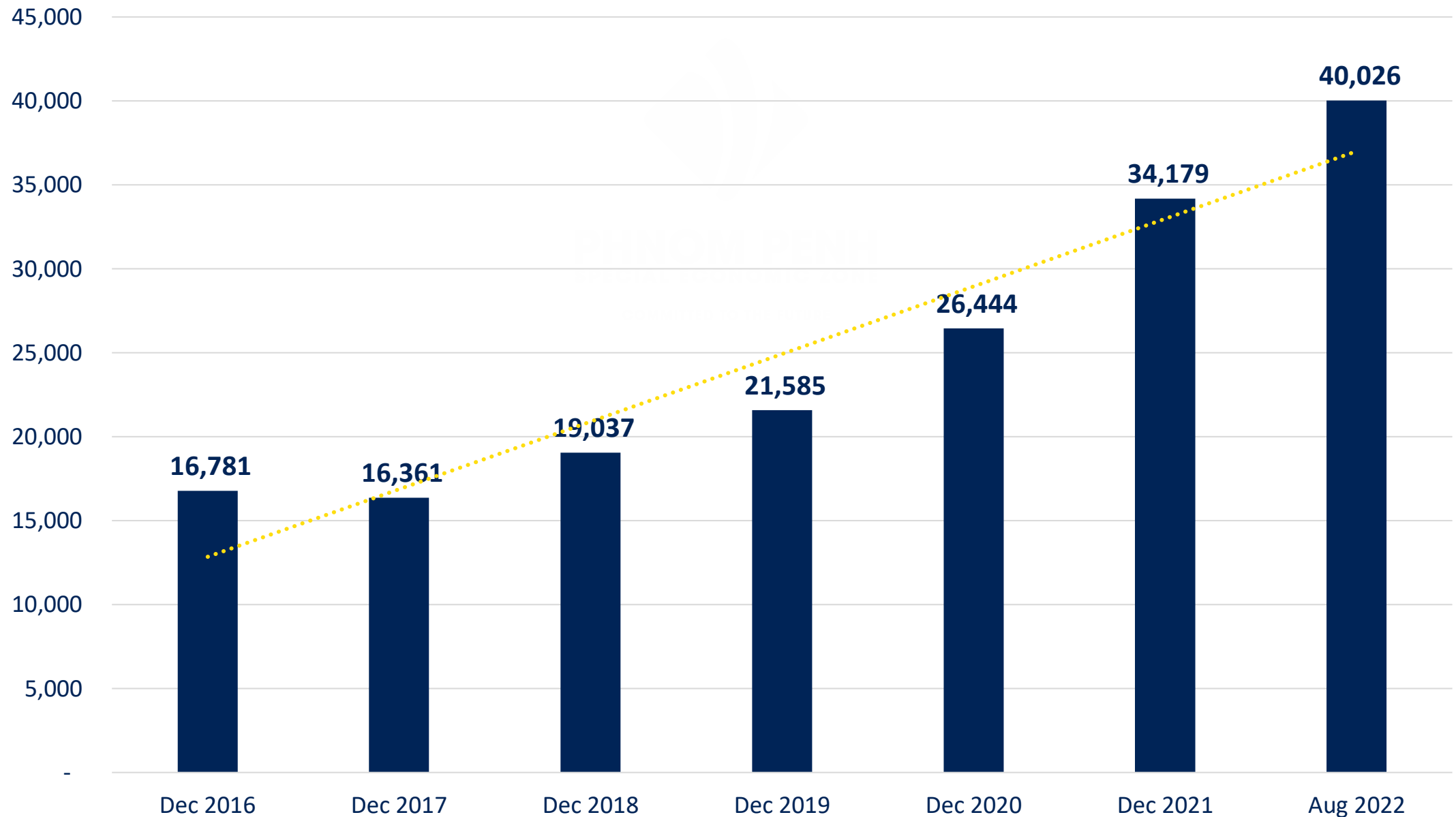
SVI PUBLIC COMPANY

PRODUCT: Electrical and Electronic Parts

EMPLOYEE: 717



Number of Employees





ROYAL GROUP
POIPET SEZ

WELCOME TO
ROYAL GROUP POIPET SEZ

LOCATION



LOCATION OF ROYAL GROUP POIPET SEZ

Current Border Gate
(Cambodia – Thailand)

Poipet
Town Center

Road 58



8km

Boarder

Cambodia

3.5km

New Boarder Gate
under Construction

Thailand



New Stung Bot Border





SUMITRONICS

Sumitronics (electronic components manufacturer) has started operation since May 2019 as the first investor



HGB Group

HGB Group, a main car distributor in Cambodia is preparing its warehouse in our zone.



Photo: Poipet SEZ gate light up



ROYAL GROUP
PHNOM PENH SEZ

Thank you very much for your attention

Please feel free to contact

uematsu@ppsez.com

michelle@ppsez.com

www.ppsez.com